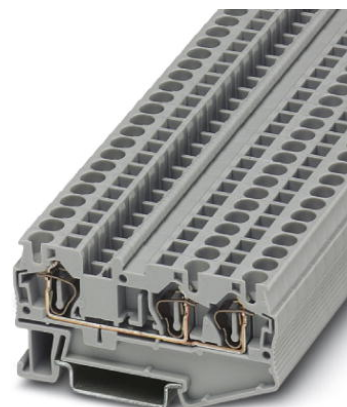


ST 4-TWIN BU

Order No.: 3031403

The illustration shows version ST 4-TWIN in gray



<http://eshop.phoenixcontact.de/phoenix/treeViewClick.do?UID=3031403>

Multiple position modular terminal block with spring-cage double connection on one side, cross section: 0,08 ... 4 mm², width: 4.2 mm, color: Blue



| Commercial data | |
|--------------------------|-------------------|
| EAN | 4017918186876 |
| Pack | 50 Pcs. |
| Customs tariff | 85369010 |
| Weight/Piece | 0.011869 KG |
| Catalog page information | Page 65 (CL-2007) |

Product notes

WEEE/RoHS-compliant since:
01/01/2003



<http://www.download.phoenixcontact.com>
Please note that the data given here has been taken from the online catalog. For comprehensive information and data, please refer to the user documentation. The General Terms and Conditions of Use apply to Internet downloads.

Technical data

| General | |
|-----------------------|------|
| Number of levels | 1 |
| Number of connections | 3 |
| Color | blue |

| | |
|------------------------------------|----|
| Insulating material | PA |
| Inflammability class acc. to UL 94 | V0 |

Dimensions

| | |
|------------------|---------|
| Width | 6.2 mm |
| Length | 71.5 mm |
| Height NS 35/7,5 | 36.5 mm |
| Height NS 35/15 | 44 mm |

Technical data

| | |
|----------------------------------|---|
| Maximum load current | 40 A (with 6 mm ² conductor cross section) |
| Rated surge voltage | 8 kV |
| Pollution degree | 3 |
| Surge voltage category | III |
| Insulating material group | I |
| Connection in acc. with standard | IEC 60947-7-1 |
| Nominal current I _N | 40 A (the maximum load current must not be exceeded by the total current of all connected conductors) |
| Nominal voltage U _N | 800 V |
| Open side panel | ja |

Connection data

| | |
|---|----------------------|
| Conductor cross section solid min. | 0.08 mm ² |
| Conductor cross section solid max. | 6 mm ² |
| Conductor cross section stranded min. | 0.08 mm ² |
| Conductor cross section stranded max. | 4 mm ² |
| Conductor cross section AWG/kcmil min. | 28 |
| Conductor cross section AWG/kcmil max | 10 |
| Conductor cross section stranded, with ferrule without plastic sleeve min. | 0.25 mm ² |
| Conductor cross section stranded, with ferrule without plastic sleeve max. | 4 mm ² |
| Conductor cross section stranded, with ferrule with plastic sleeve min. | 0.25 mm ² |
| Conductor cross section stranded, with ferrule with plastic sleeve max. | 4 mm ² |
| 2 conductors with same cross section, stranded, TWIN ferrules with plastic sleeve, min. | 0.5 mm ² |

| | |
|---|------------------------|
| 2 conductors with same cross section, stranded, TWIN ferrules with plastic sleeve, max. | 1 mm ² |
| Type of connection | Spring-cage connection |
| Stripping length | 10 mm |
| Internal cylindrical gage | A4 |

Certificates / Approvals

Approval logo



CUL

| | |
|--------------------------------|-------|
| Nominal voltage U _N | 600 V |
| Nominal current I _N | 30 A |
| AWG/kcmil | 28-10 |

UL

| | |
|--------------------------------|---|
| Nominal voltage U _N | 600 V |
| Nominal current I _N | 30 A |
| AWG/kcmil | 28-10 |
| Certification | BV, CB, CUL, DNV, GL, GOST, LR, NK, UL, VDE-PZI |

requested approbations

| | |
|-------------------|----------------|
| Certification Ex: | IECEX, KEMA-EX |
|-------------------|----------------|

Accessories

| Item | Designation | Description |
|------|-------------|-------------|
|------|-------------|-------------|

Assembly

| | | |
|---------|-------------|---|
| 3030789 | ATP-ST-TWIN | Partition plate, for visual and electrical separation of terminal groups, width: 2 mm, color: gray |
| 3022218 | CLIPFIX 35 | Snap-on end bracket, for 35 mm NS 35/7.5 or NS 35/15 mounting rail, can be fitted with Zack strip ZB 8 and ZB 8/27, terminal strip marker KLM 2 and KLM, width: 9.5 mm, color: gray |
| 3030491 | D-ST 4-TWIN | Cover, width: 2.2 mm, color: gray |
| 3036615 | DS-ST 4 | End cover segment, for covering multi-conductor terminal blocks when two-conductor terminal blocks are aligned, color: Gray |

| | | |
|---------|-----------------------------|---|
| 1201442 | E/UK | End clamp, for supporting the electronic base. If mounted vertically, 2 end clamps are required in each case |
| 0801762 | NS 35/ 7,5 CU UNPERF 2000MM | DIN rail, material: Copper, unperforated, height 7.5 mm, width 35 mm, length: 2 m |
| 0801733 | NS 35/ 7,5 PERF 2000MM | DIN rail, material: Steel, perforated, height 7.5 mm, width 35 mm, length: 2 m |
| 0801681 | NS 35/ 7,5 UNPERF 2000MM | DIN rail, material: Steel, unperforated, height 7.5 mm, width 35 mm, length: 2 m |
| 1201756 | NS 35/15 AL UNPERF 2000MM | DIN rail, deep-drawn, high profile, unperforated, 1.5 mm thick, material: Aluminum, height 15 mm, width 35 mm, length 2 m |
| 1201895 | NS 35/15 CU UNPERF 2000MM | DIN rail, material: Copper, unperforated, 1.5 mm thick, height 15 mm, width 35 mm, length: 2 m |
| 1201730 | NS 35/15 PERF 2000MM | DIN rail, material: Steel, perforated, height 15 mm, width 35 mm, length: 2 m |
| 1201714 | NS 35/15 UNPERF 2000MM | DIN rail, material: Steel, unperforated, height 15 mm, width 35 mm, length: 2 m |
| 1201798 | NS 35/15-2,3 UNPERF 2000MM | DIN rail, material: Steel, unperforated, 2.3 mm thick, height 15 mm, width 35 mm, length: 2 m |

Bridges

| | | |
|---------|----------|--|
| 3030336 | FBS 2-6 | Plug-in bridge for cross-connections in the terminal center, 2-pos., color: Red |
| 3030242 | FBS 3-6 | Plug-in bridge for cross-connections in the terminal center, 3-pos., color: Red |
| 3030255 | FBS 4-6 | Plug-in bridge for cross-connections in the terminal center, 4-pos., color: Red |
| 3030349 | FBS 5-6 | Plug-in bridge for cross-connections in the terminal center, 5-pos., color: Red |
| 3030271 | FBS 10-6 | Plug-in bridge for cross-connections in the terminal center, 10-pos., color: Red |
| 3030365 | FBS 20-6 | Plug-in bridge for cross-connections in the terminal center, 20-pos., color: Red |

Marking

| | | |
|---------|---------------|---|
| 1050499 | ZB 6:SO/CMS | Zack strip, 10-section, divisible, special printing, marking according to customer requirements |
| 0803650 | ZBFM 6:SO/CMS | Special printing, Zack marker sheet, flat, 100-section, divisible, marking according to customer requirements |

Plug/Adapter

| | | |
|---------|-----------|--|
| 3002885 | ISH 4/0,5 | Cross-section range: 0.25 - 0.5 mm ² / 0.75 - 1 mm ² |
| 3002898 | ISH 4/1,0 | Cross-section range: 0.25 - 0.5 mm ² / 0.75 - 1 mm ² |
| 0201744 | MPS-MT | Test plug, consisting of: Metal part for 2.3 mm diameter socket hole |

| | | |
|---------|-------|--|
| 3030925 | PAI-4 | Test adapter, for 4 mm diameter test plug PS and safety test plug, makes contact in the bridge shaft |
| 3030996 | PS-6 | Modular test plug, for individual assembly of test plug strips, for UT, ST, DT and QT terminal blocks, can be labeled with ZBF 6, color: Red |
| 0201647 | RPS | Reducing plug, for transition from 4 mm diameter test plug socket, insulation: gray |

Tools

| | | |
|---------|---------------|---|
| 1204517 | SZF 1-0,6X3,5 | Screwdriver, blade: 0.6 x 3.5 x 100 mm, length 180 mm |
|---------|---------------|---|